

The map displays wind vectors and sea level pressure (SLP) values in the North Atlantic. Wind vectors are represented by arrows with numerical values indicating speed. SLP values are shown as contour lines with numerical values. Key locations marked include Fort William, Oban, Greenock, Kirkcudbright, and Belfast. An inset map shows the broader context of the North Atlantic.

The map illustrates the circulation of water masses in the North Atlantic. Arrows indicate the direction of flow, and numbers represent salinity values. Key locations marked include Fort William, Oban, Greenock, Kirkcudbright, and Belfast. An inset map shows the broader context of the North Atlantic circulation.

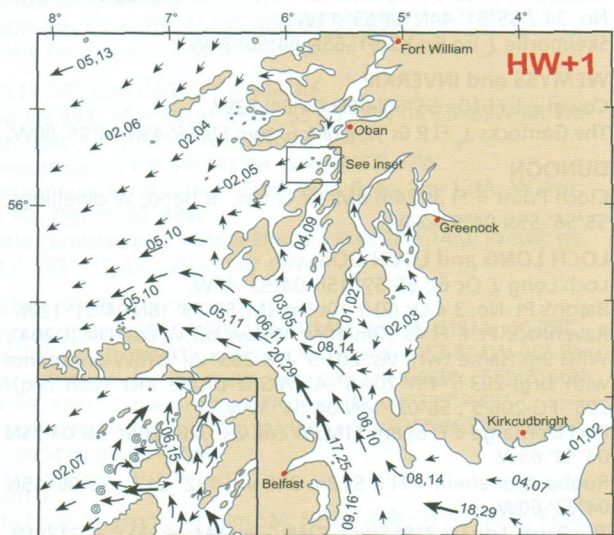
The map displays wind vectors and sea state data for the North Atlantic region. Wind vectors are represented by arrows with numerical values indicating speed. Sea state data is shown as numbers along the coastlines. Key locations marked include Fort William, Oban, Greenock, Kirkcudbright, and Belfast. An inset map shows the broader context of the North Atlantic.

HW Dover (0120 before HW Greenock)

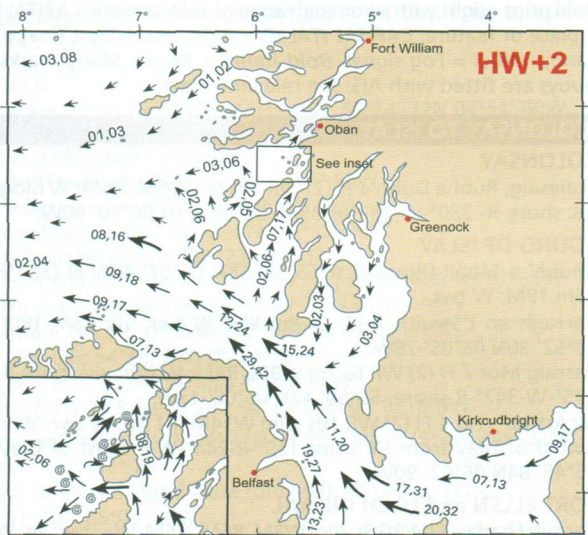


Alba Sailing - 2011

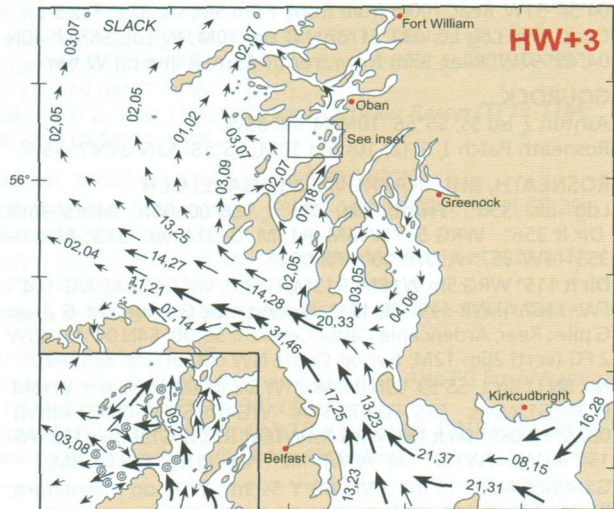
Northward 1.2 Mull of Kintyre 2.9 Irish Sea 3.2, 4.2 Northern Ireland 6.2



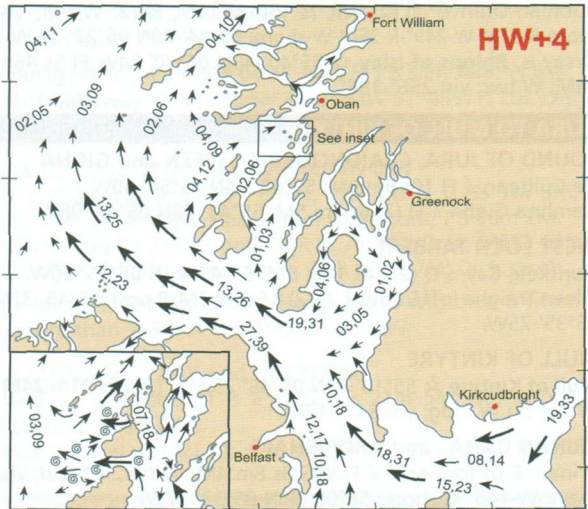
1 Hour after HW Dover (0020 before HW Greenock)



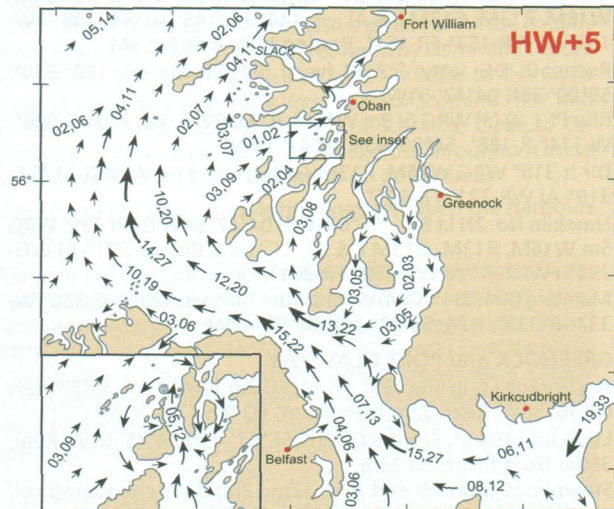
2 Hours after HW Dover (0040 after HW Greenock)



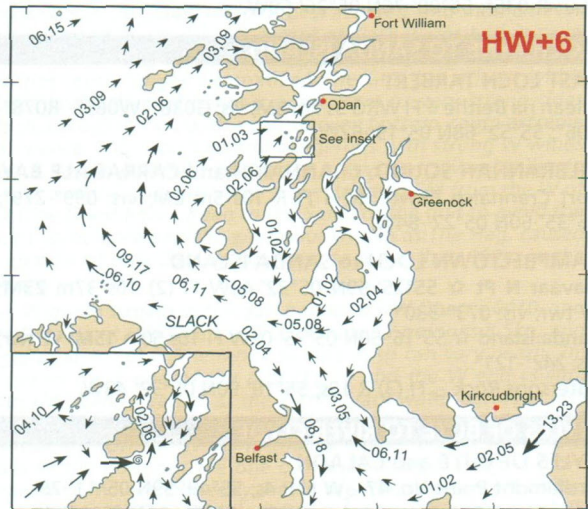
3 Hours after HW Dover (0140 after HW Greenock)



4 Hours after HW Dover (0240 after HW Greenock)



5 Hours after HW Dover (0340 after HW Greenock)



6 Hours after HW Dover (0440 after HW Greenock)